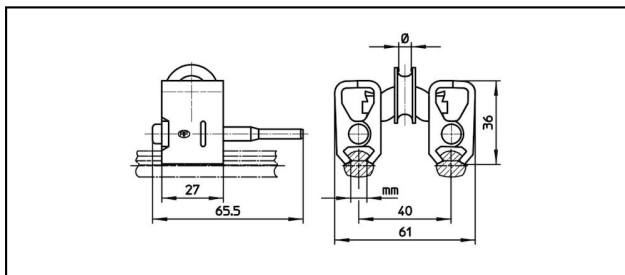
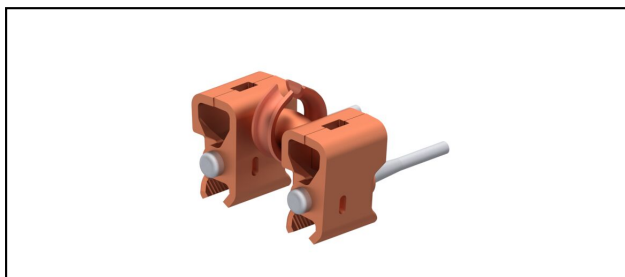


## Seilhängerklammern

## ■ SKDF7

**Anwendung**

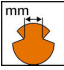
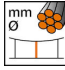
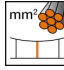
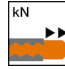

Für Seilhänger, nicht stromführend

**Eigenschaften**

Andere Fahrdrahtkerben auf Anfrage

**Material**

KörperCuNiSi / Kausche Cu

Artikel-Nr.									
625.027.000	6.92	4.5	10	5					0.186
625.027.001	6.05	4.5	10	5					0.186

Technische Spezifikationen: **SKDF7**

	625.027.000	625.027.001
<b>Fahrdraht-Kerbe</b>	6.92 mm	6.05 mm
<b>Hängerseil Durchmesser</b>	4.5 mm	
<b>Hängerseil Fläche</b>	10 mm <sup>2</sup>	
<b>Ausreisskraft</b>	5 kN	
Kommerzielle Spezifikation		
<b>Zolltarifnummer</b>	85359000	
<b>Ursprungsland</b>	CH	
Logistische Spezifikation		
<b>Kilo / Stück</b>	0.186 kg	

