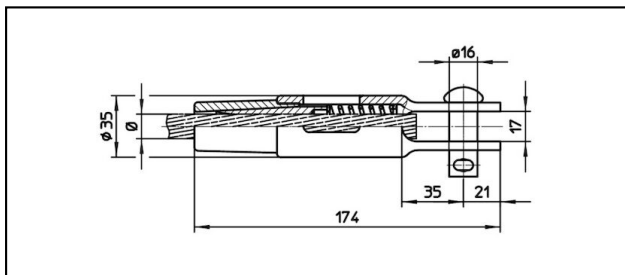
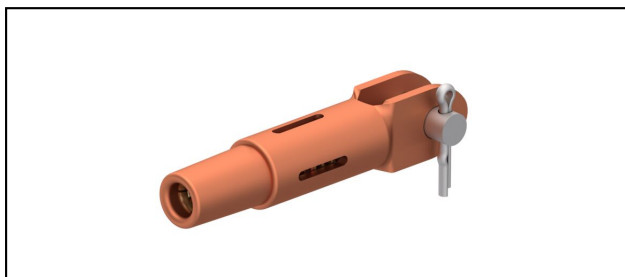


Gabelendmuffen

GCK174/17



Anwendung


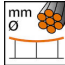
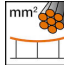
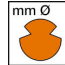


Zugfeste Verbindung für Leiter aus Cu, Staku oder Bz

Eigenschaften

Betriebslast min. 3 kN / max. 25 kN
Bruchlast des Gehäuses min. 80 kN

Material

Gehäuse CuNiSi / Konus AlBz bzw. CuNiSi

Artikel-Nr.										
615.039.106	S120/FD150	14.5	120	14.5	150					0.73
615.040.105	S120	14	120							0.73
615.041.106	S150	15.8	150							0.72
615.054.105	FD120			13.2	120					0.73

Technische Spezifikationen: **GCK174/17**

	615.039.106	615.040.105	615.041.106	615.054.105
Bahn Produkt Name	S120/FD150	S120	S150	FD120
Tragseil Durchmesser	14.5 mm	14 mm	15.8 mm	
Tragseil Seilfläche	120 mm ²		150 mm ²	
Fahrdraht Durchmesser	14.5 mm			13.2 mm
Fahrdraht Fläche	150 mm ²			120 mm ²
Kommerzielle Spezifikation				
Zolltarifnummer	85359000			
Ursprungsland	CH			
Logistische Spezifikation				
Kilo / Stück	0.73 kg		0.72 kg	0.73 kg

