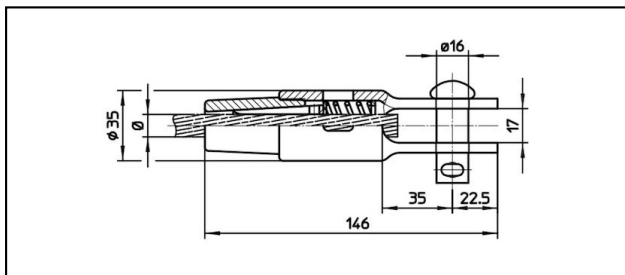
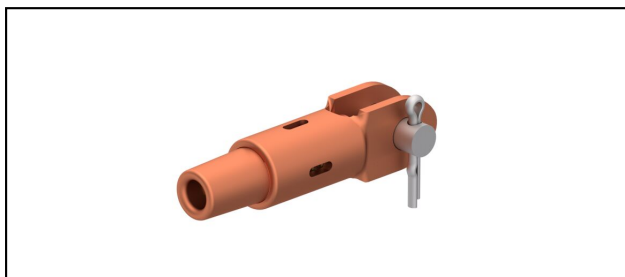


Gabelendmuffen

■ GCK146/17 Gabelendmuffe



Anwendung

Zugfeste Verbindung für Leiter aus Cu, Staku oder Bz


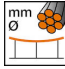
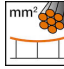
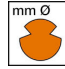


Eigenschaften

Betriebslast min. 3 kN / max. 25 kN

Bruchlast des Gehäuses min. 80 kN

Material

Gehäuse CuNiSi / Konus AlBz bzw. CuNiSi

Artikel-Nr.										
615.030.041	D5	4.9	5							0.62

Technische Spezifikationen: **Gabelendmuffe GCK146/17**

Artikel-Nr.	615.030.041
Bahn Produkt Name	D5
Tragseil Durchmesser	4.9 mm
Tragseil Seilfläche	5 mm ²
Kommerzielle Spezifikation	
Zolltarifnummer	85359000
Ursprungsland	ZA*
Logistische Spezifikation	
Kilo / Stück	0.62 kg

