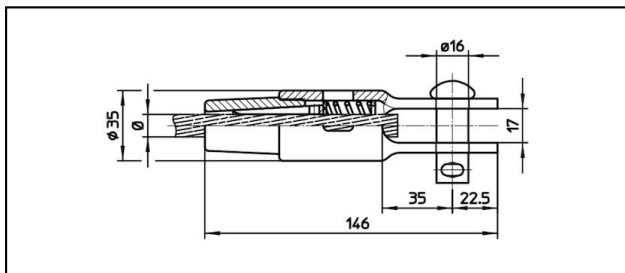
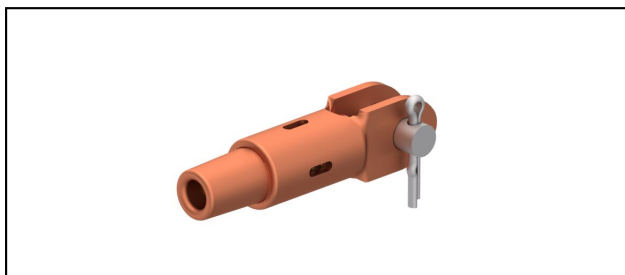


## Gabelendmuffen

### ■ GCK146/17 Gabelendmuffe



#### Anwendung


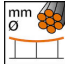
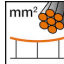
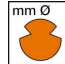


Zugfeste Verbindung für Leiter aus Cu, Staku oder Bz

#### Eigenschaften

Betriebslast min. 3 kN / max. 25 kN  
Bruchlast des Gehäuses min. 80 kN

#### Material

Gehäuse CuNiSi / Konus AlBz bzw. CuNiSi

Artikel-Nr.									
615.035.151	FD107			12.8	107				0.6

Technische Spezifikationen: **Gabelendmuffe GCK146/17**

Artikel-Nr.	615.035.151
<b>Bahn Produkt Name</b>	FD107
<b>Fahrdraht Durchmesser</b>	12.8 mm
<b>Fahrdraht Fläche</b>	107 mm <sup>2</sup>
Kommerzielle Spezifikation	
<b>Zolltarifnummer</b>	85359000
<b>Ursprungsland</b>	CH
Logistische Spezifikation	
<b>Kilo / Stück</b>	0.6 kg

