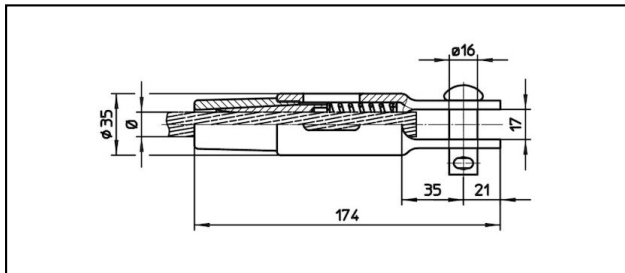
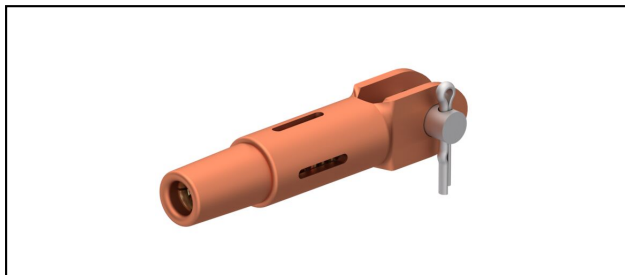


Gabelendmuffen

■ GCK174/17 Gabelendmuffe



Anwendung

Zugfeste Verbindung für Leiter aus Cu, Staku oder Bz


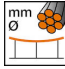
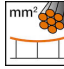
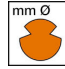


Eigenschaften

Betriebslast min. 3 kN / max. 25 kN

Bruchlast des Gehäuses min. 80 kN

Material

Gehäuse CuNiSi / Konus AlBz bzw. CuNiSi

Artikel-Nr.									
615.054.105	FD120			13.2	120				0.73

Technische Spezifikationen: **Gabelendmuffe GCK174/17**

Artikel-Nr.	615.054.105
Bahn Produkt Name	FD120
Fahrdraht Durchmesser	13.2 mm
Fahrdraht Fläche	120 mm ²
Kommerzielle Spezifikation	
Zolltarifnummer	85359000
Ursprungsland	CH
Logistische Spezifikation	
Kilo / Stück	0.73 kg

