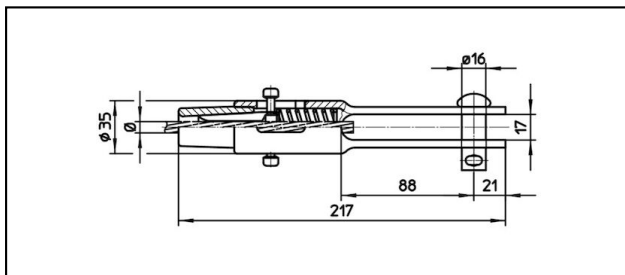
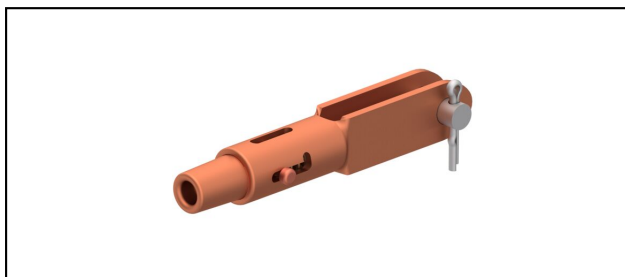


Gabelendmuffen

■ GCL217/17 Gabelendmuffe



Anwendung

Zugfeste Verbindung für Leiter aus Cu, Bz, Stahl und Staku

Eigenschaften


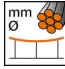
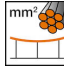
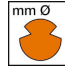



Betriebslast min. 3 kN / max. 25 kN
Bruchlast des Gehäuses min. 80 kN

Material

Gehäuse CuNiSi / Konus AlBz bzw. CuNiSi

Legende

- 1) Konus aus Inox für Stahlseile
- 2) Ohne Bolzen Ø 16mm (Bohrung Ø 16.75mm)

Artikel-Nr.									
615.121.042	D7	6.9	38					0.87	

Technische Spezifikationen: **Gabelendmuffe GCL217/17**

Artikel-Nr.	615.121.042
Bahn Produkt Name	D7
Tragseil Durchmesser	6.9 mm
Tragseil Seilfläche	38 mm ²
Kommerzielle Spezifikation	
Zolltarifnummer	85359000
Ursprungsland	CH
Logistische Spezifikation	
Kilo / Stück	0.87 kg

