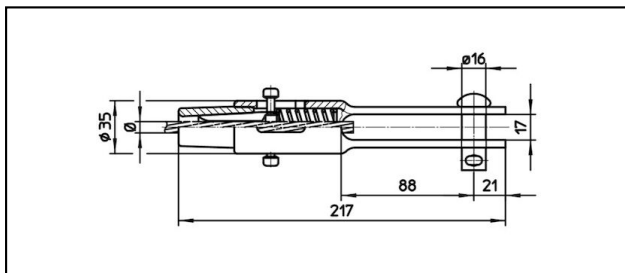
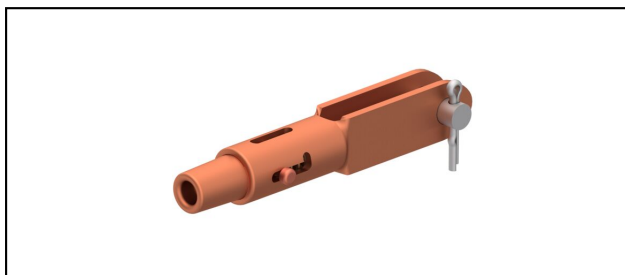


Gabelendmuffen

■ GCL217/17 Gabelendmuffe



Anwendung

Zugfeste Verbindung für Leiter aus Cu, Bz, Stahl und Staku

Eigenschaften

Betriebslast min. 3 kN / max. 25 kN

Bruchlast des Gehäuses min. 80 kN


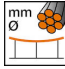
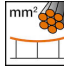
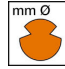



Material

Gehäuse CuNiSi / Konus AlBz bzw. CuNiSi

Legende

1) Konus aus Inox für Stahlseile

2) Ohne Bolzen Ø 16mm (Bohrung Ø 16.75mm)

Artikel-Nr.									
615.087.027	D8	7.9	50					0.86	

Technische Spezifikationen: **Gabelendmuffe GCL217/17**

Artikel-Nr.	615.087.027
Bahn Produkt Name	D8
Tragseil Durchmesser	7.9 mm
Tragseil Seilfläche	50 mm ²
Kommerzielle Spezifikation	
Zolltarifnummer	85359000
Ursprungsland	CH
Logistische Spezifikation	
Kilo / Stück	0.86 kg

