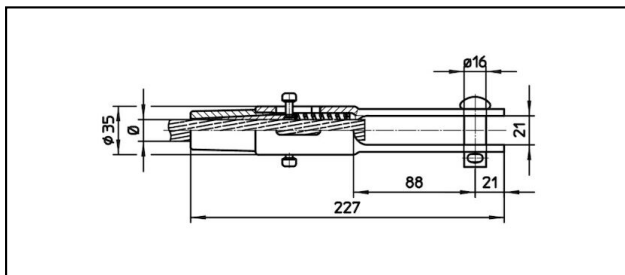
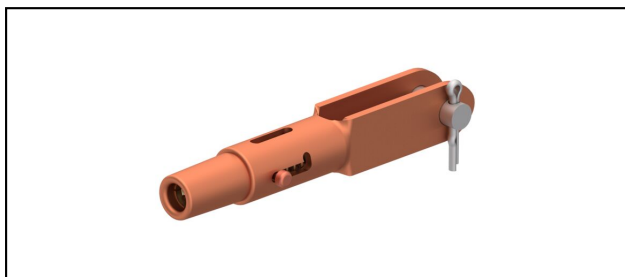


Gabelendmuffen

■ GCL227/21 Gabelendmuffe



Anwendung


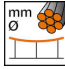
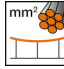
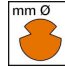


Zugfeste Verbindung für Leiter aus Cu, Staku oder Bz

Eigenschaften

Betriebslast min. 3 kN / max. 25 kN
Bruchlast des Gehäuses min. 80 kN

Material

Gehäuse CuNiSi / Konus AlBz

Artikel-Nr.									
615.101.106	S150	15.8	150						0.89

Technische Spezifikationen: **Gabelendmuffe GCL227/21**

Artikel-Nr.	615.101.106
Bahn Produkt Name	S150
Tragseil Durchmesser	15.8 mm
Tragseil Seilfläche	150 mm ²
Kommerzielle Spezifikation	
Zolltarifnummer	85359000
Ursprungsland	CH
Logistische Spezifikation	
Kilo / Stück	0.89 kg

