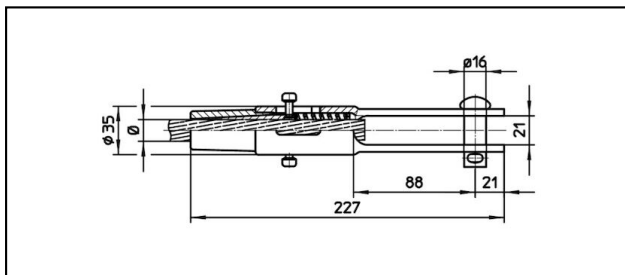
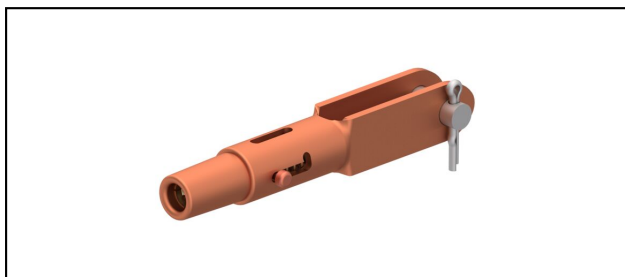


Gabelendmuffen

■ GCL227/21 Gabelendmuffe



Anwendung


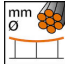
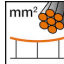
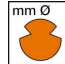


Zugfeste Verbindung für Leiter aus Cu, Staku oder Bz

Eigenschaften

Betriebslast min. 3 kN / max. 25 kN
Bruchlast des Gehäuses min. 80 kN

Material

Gehäuse CuNiSi / Konus AlBz

Artikel-Nr.									
615.123.105	FD120			13.8	120				0.91

Technische Spezifikationen: **Gabelendmuffe GCL227/21**

Artikel-Nr.	615.123.105
Bahn Produkt Name	FD120
Fahrdraht Durchmesser	13.8 mm
Fahrdraht Fläche	120 mm ²
Kommerzielle Spezifikation	
Zolltarifnummer	85359000
Ursprungsland	CH
Logistische Spezifikation	
Kilo / Stück	0.91 kg

