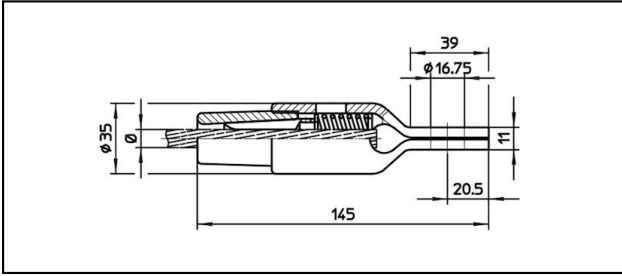
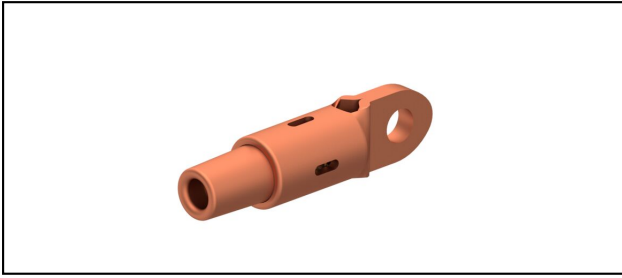


## Ösenendmuffen CuNiSi

### ■ OCK145 Ösenendmuffe



#### Anwendung

Zugfeste Verbindung für Leiter aus Cu, Staku oder Bz


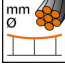
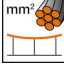
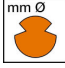


#### Eigenschaften

Betriebslast min. 3 kN / max. 25 kN

Bruchlast des Gehäuses min. 80 kN

#### Material

Gehäuse CuNiSi / Konus AlBz

Artikel-Nr.									
615.150.041	D5	4.9	5						0.55

Technische Spezifikationen: **Ösenendmuffe OCK145**

Artikel-Nr.	615.150.041
<b>Bahn Produkt Name</b>	D5
<b>Tragseil Durchmesser</b>	4.9 mm
<b>Tragseil Seilfläche</b>	5 mm <sup>2</sup>
Kommerzielle Spezifikation	
<b>Zolltarifnummer</b>	0
<b>Ursprungsland</b>	ZA*
Logistische Spezifikation	
<b>Kilo / Stück</b>	0.55 kg

