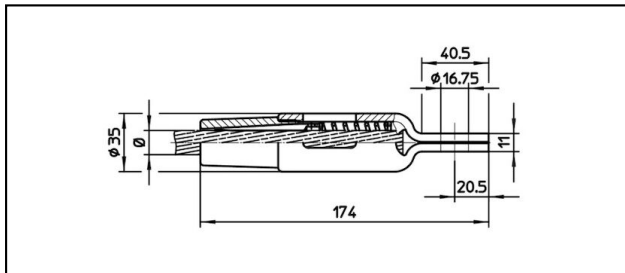
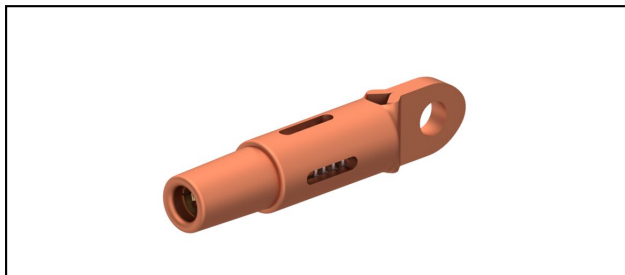


Ösenendmuffen CuNiSi

■ OCK174 Ösenendmuffe



Anwendung


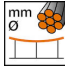
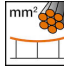
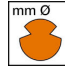


Zugfeste Verbindung für Leiter aus Cu, Staku oder Bz

Eigenschaften

Betriebslast min. 3 kN / max. 25 kN
Bruchlast des Gehäuses min. 80 kN

Material

Gehäuse CuNiSi / Konus AlBz

Artikel-Nr.										
615.160.105	S120	14	120							0.64

Technische Spezifikationen: **Ösenendmuffe OCK174**

Artikel-Nr.	615.160.105
Bahn Produkt Name	S120
Tragseil Durchmesser	14 mm
Tragseil Seilfläche	120 mm ²
Kommerzielle Spezifikation	
Zolltarifnummer	85359000
Ursprungsland	CH
Logistische Spezifikation	
Kilo / Stück	0.64 kg

