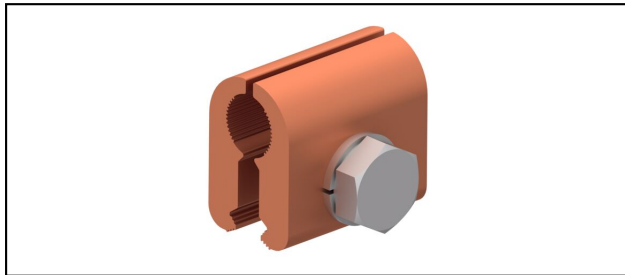


## Einspeisklemmen

■ **EK36** Parallel-Einspeisklemme**Anwendung**

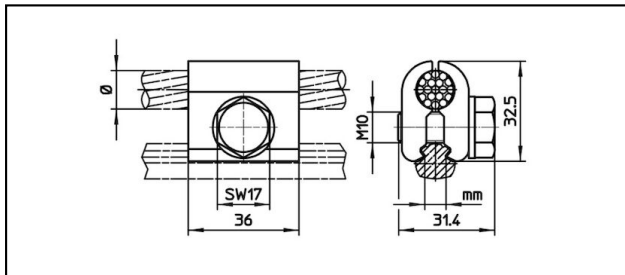
Parallel-Einspeisklemme für Fahrdrabt

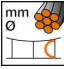
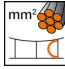
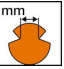


**Eigenschaften**

Anziehdrehmoment 50 Nm

**Material**

CuNiSi



Artikel-Nr.									
635.348.000	12.5	95	6.92	107 - 150					0.15

Technische Spezifikationen: **Parallel-Einspeisklemme EK36**

Artikel-Nr.	635.348.000
Anziehdrehmoment	50 N·m
Einspeiskabel Durchmesser	12.5 mm
Einspeisekabel Fläche	95 mm <sup>2</sup>
Fahrdraht-Kerbe	6.92 mm
Fahrdraht Fläche	107 - 150 mm <sup>2</sup>
Kommerzielle Spezifikation	
Zolltarifnummer	85359000
Ursprungsland	CH
Logistische Spezifikation	
Kilo / Stück	0.15 kg

