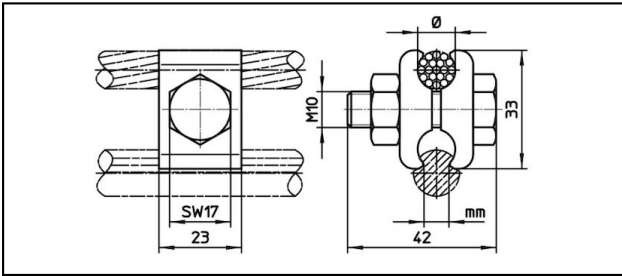
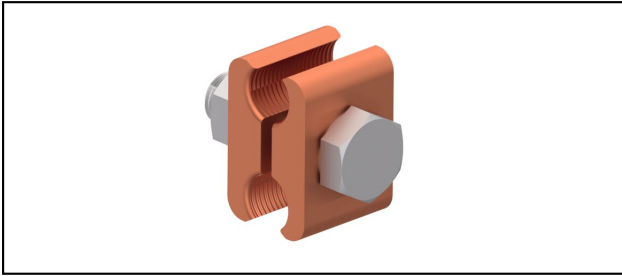


Einspeisklemmen

■ **PK23** Parallel-Einspeisklemme**Anwendung**

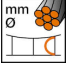
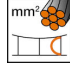
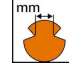

Parallel-Einspeisklemme für Fahrdrabt

Eigenschaften

Anziehdrehmoment 50 Nm

Material

Klemmplatten CuNiSi

Artikel-Nr.									
635.106.165	11	70	5.6 - 6.9						0.117

Technische Spezifikationen: **Parallel-Einspeisklemme PK23**

Artikel-Nr.	635.106.165
Anziehdrehmoment	50 N·m
Einspeiskabel Durchmesser	11 mm
Einspeisekabel Fläche	70 mm ²
Fahrdraht-Kerbe	5.6 - 6.9 mm
Kommerzielle Spezifikation	
Zolltarifnummer	85359000
Ursprungsland	CH
Logistische Spezifikation	
Kilo / Stück	0.117 kg

