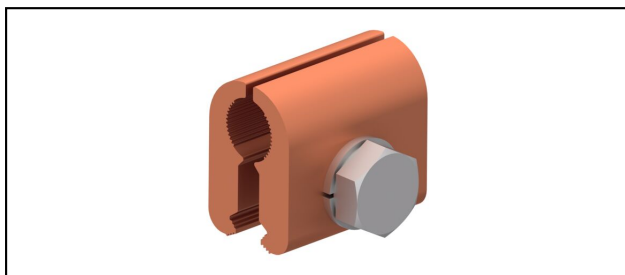


Einspeisklemmen

EK36

**Anwendung**

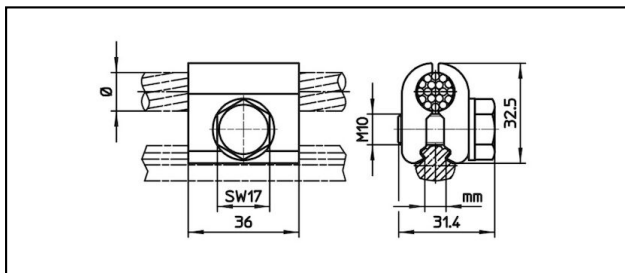
Parallel-Einspeisklemme für Fahrdrabt

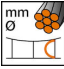
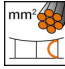
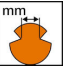


Eigenschaften

Anziehdrehmoment 50 Nm

Material

CuNiSi



Artikel-Nr.									
635.348.000	12.5	95	6.92	107 - 150					0.15

Technische Spezifikationen: **EK36**

	635.348.000
Anziehdrehmoment	50 N·m
Einspeiskabel Durchmesser	12.5 mm
Einspeisekabel Fläche	95 mm ²
Fahrdraht-Kerbe	6.92 mm
Fahrdraht Fläche	107 - 150 mm ²
Kommerzielle Spezifikation	
Zolltarifnummer	85359000
Ursprungsland	CH
Logistische Spezifikation	
Kilo / Stück	0.15 kg

