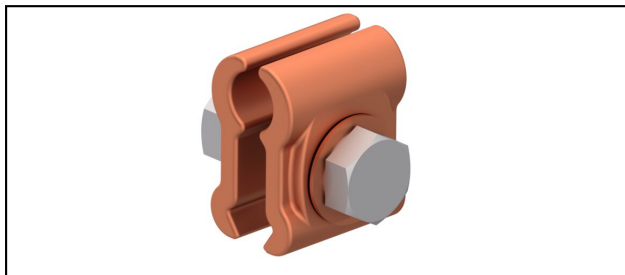


Einspeisklemmen

■ PEK2

**Anwendung**

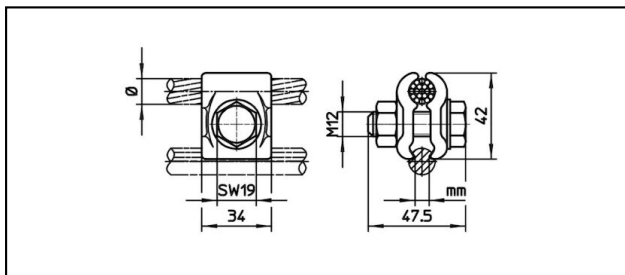
Parallel-Einspeisklemme für Fahrdrabt

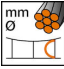
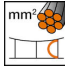
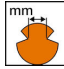

Eigenschaften

Anziehdrehmoment 50 Nm

Material

CuNiSi



Artikel-Nr.									
635.153.000	10.5 - 14	70 - 120	3.75 - 8.5						0.22

Technische Spezifikationen: **PEK2**

	635.153.000
Anziehdrehmoment	50 N·m
Einspeiskabel Durchmesser	10.5 - 14 mm
Einspeisekabel Fläche	70 - 120 mm ²
Fahrdraht-Kerbe	3.75 - 8.5 mm
Kommerzielle Spezifikation	
Zolltarifnummer	85359000
Ursprungsland	CH
Logistische Spezifikation	
Kilo / Stück	0.22 kg

