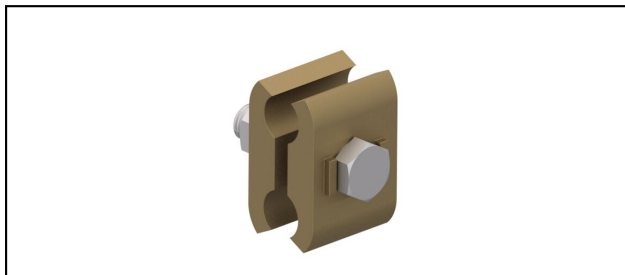


## Einspeisklemmen

## ■ PEK11

**Anwendung**

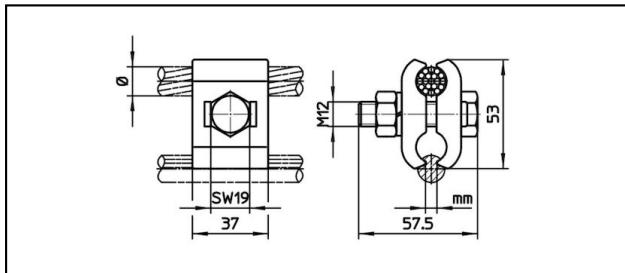
Parallel-Einspeisklemme für Fahrdrabt

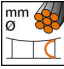
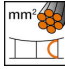
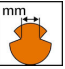

**Eigenschaften**

Anziehdrehmoment 65 Nm

**Material**

CuZn



Artikel-Nr.									
635.161.000	12.5 - 16	95 - 150	3.75 - 8.5						0.37

Technische Spezifikationen: **PEK11**

	635.161.000
<b>Anziehdrehmoment</b>	65 N·m
<b>Einspeiskabel Durchmesser</b>	12.5 - 16 mm
<b>Einspeisekabel Fläche</b>	95 - 150 mm <sup>2</sup>
<b>Fahrdraht-Kerbe</b>	3.75 - 8.5 mm
Kommerzielle Spezifikation	
<b>Zolltarifnummer</b>	85359000
<b>Ursprungsland</b>	CE*
Logistische Spezifikation	
<b>Kilo / Stück</b>	0.37 kg

