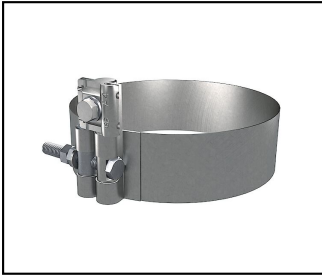
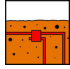
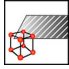
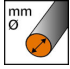

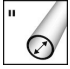






Ringerdung

RE 36 Rohrbride, Inox A4



Eigenschaften
Spannschraube M10x90
inkl. Klemmplatte

Artikel-Nr.	E-Nummer									
260.006.078	156 832 510	ok	InoxA4	6 - 10	125	5"	140 - 146	M10x90		1

Technische Spezifikationen: **Rohrbride, Inox A4 RE 36**

Artikel-Nr.	260.006.078
Im Erdreich einsetzbar	ok
Material	InoxA4
Drahtdurchmesser	6 - 10 mm
Nennweite	125
Nennweite	5"
Spannbereich Rohrdurchmesser	140 - 146 mm
Querschnitt des anzuschliessenden Kabels	50 mm ²
Anzahl der Leiter	1
Oberfläche	unbehandelt
Schraube	M10x90
Klemm-/Spannbereich	142 - 146 mm
Drehmoment	25 N·m
Kommerzielle Spezifikation	
Zolltarifnummer	85389000
Ursprungsland	CH
Logistische Spezifikation	
VPE Gewicht	0.7 kg

