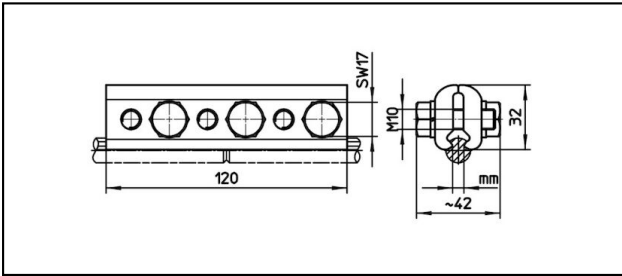
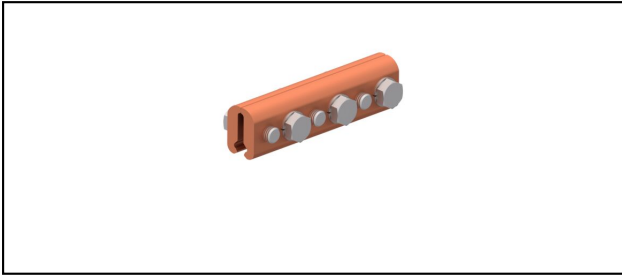


## Stossklemmen

## ■ SKF6-120

**Anwendung**

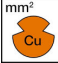
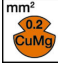

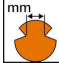
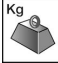
Stossklemme für Kupfer- oder legierten Fahrdrabt

**Eigenschaften**

Anziehdrehmoment 50 Nm

**Material**

Klemmplatten CuNiSi

Artikel-Nr.	 mm <sup>2</sup>	 mm <sup>2</sup>	 mm <sup>2</sup>	 mm					 Kg
635.032.000	- 150	- 107	- 150	5.6 - 6.9					0.638

Technische Spezifikationen: **SKF6-120**

	635.032.000
<b>Anziehdrehmoment</b>	50 N·m
<b>Fahrdraht Fläche Cu</b>	- 150 mm <sup>2</sup>
<b>Fahrdraht Fläche CuMg 0.2</b>	- 107 mm <sup>2</sup>
<b>Fahrdraht Fläche CuAg</b>	- 150 mm <sup>2</sup>
<b>Fahrdraht-Kerbe</b>	5.6 - 6.9 mm
Kommerzielle Spezifikation	
<b>Zolltarifnummer</b>	85359000
<b>Ursprungsland</b>	CH
Logistische Spezifikation	
<b>Kilo / Stück</b>	0.638 kg

