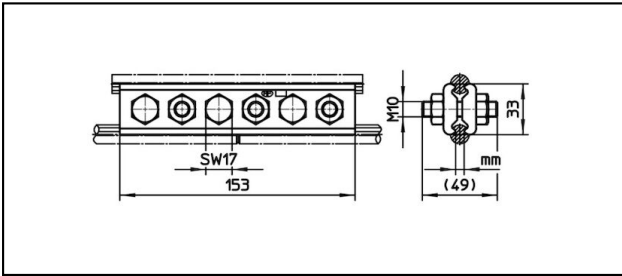
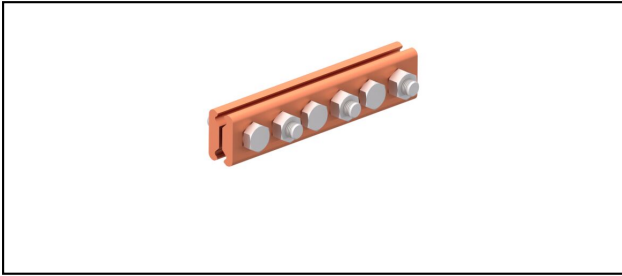


## Stossklemmen

■ **SK6-153** Stossklemme**Anwendung**

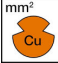
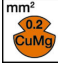

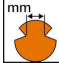
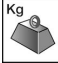
Stossklemme für Kupfer- oder legierten Fahrdrabt

**Eigenschaften**

Anziehdrehmoment 50 Nm

**Material**

Klemmplatten CuNiSi

Artikel-Nr.	 mm <sup>2</sup>	 mm <sup>2</sup>	 mm <sup>2</sup>	 mm					 Kg
635.012.000	- 178	- 107	- 120	4.5 - 8.5					0.8

Technische Spezifikationen: **Stossklemme SK6-153**

Artikel-Nr.	635.012.000
Anziehdrehmoment	50 N·m
Fahrdraht Fläche Cu	- 178 mm <sup>2</sup>
Fahrdraht Fläche CuMg 0.2	- 107 mm <sup>2</sup>
Fahrdraht Fläche CuAg	- 120 mm <sup>2</sup>
Fahrdraht-Kerbe	4.5 - 8.5 mm
Kommerzielle Spezifikation	
Zolltarifnummer	85359000
Ursprungsland	CH
Logistische Spezifikation	
Kilo / Stück	0.8 kg

