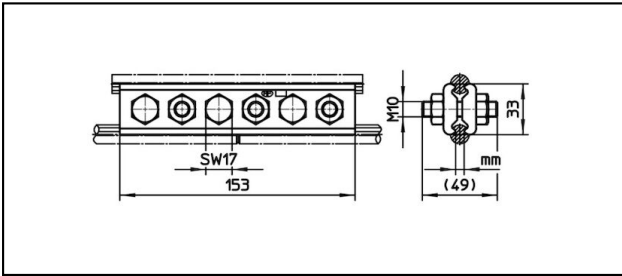
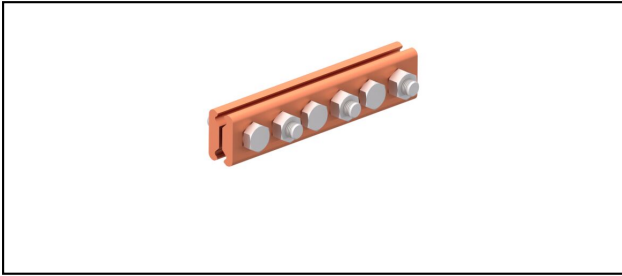


Stossklemmen

■ SK6-153 Stossklemme



Anwendung

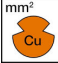
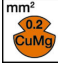

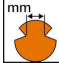
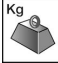
Stossklemme für Kupfer- oder legierten Fahrdrabt

Eigenschaften

Anziehdrehmoment 50 Nm

Material

Klemmplatten CuNiSi

Artikel-Nr.	 mm ²	 mm ²	 mm ²	 mm					 Kg
635.041.000	- 178	- 107	- 120	4.5 - 6.9					0.8

Technische Spezifikationen: **Stossklemme SK6-153**

Artikel-Nr.	635.041.000
Anziehdrehmoment	50 N·m
Fahrdraht Fläche Cu	- 178 mm ²
Fahrdraht Fläche CuMg 0.2	- 107 mm ²
Fahrdraht Fläche CuAg	- 120 mm ²
Fahrdraht-Kerbe	4.5 - 6.9 mm
Kommerzielle Spezifikation	
Zolltarifnummer	85359000
Ursprungsland	CH
Logistische Spezifikation	
Kilo / Stück	0.8 kg

