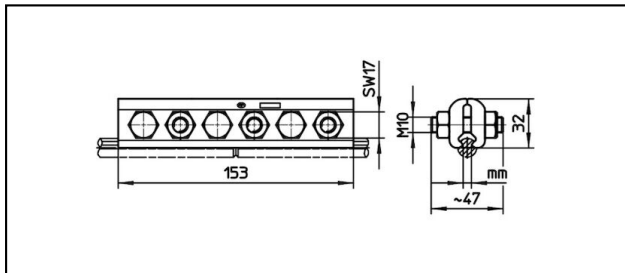
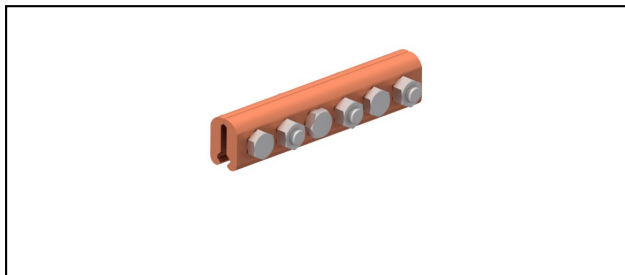


Stossklemmen

■ SKF6-153 Stossklemme



Anwendung

Stossklemme für Kupfer- oder legierten Fahrdrabt

Eigenschaften

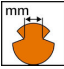
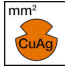
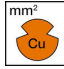
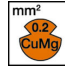
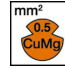


Anziehdrehmoment 50 Nm

Material

Klemmplatten CuNiSi

Legende

- 1) Mit Unterlagsscheibe und Kugelscheiben
- 2) Spezielles, hochfestes CuNiSi

Artikel-Nr.									
635.322.000	5 - 6.9	- 150	- 150	- 107	- 107			0.87	

Technische Spezifikationen: **Stossklemme SKF6-153**

Artikel-Nr.	635.322.000
Anziehdrehmoment	50 N·m
Fahrdraht Fläche Cu	- 150 mm ²
Fahrdraht Fläche CuMg 0.2	- 107 mm ²
Fahrdraht Fläche CuMg 0.5	- 107 mm ²
Fahrdraht Fläche CuAg	- 150 mm ²
Fahrdraht-Kerbe	5 - 6.9 mm
Kommerzielle Spezifikation	
Zolltarifnummer	85359000
Ursprungsland	CH
Logistische Spezifikation	
Kilo / Stück	0.87 kg

