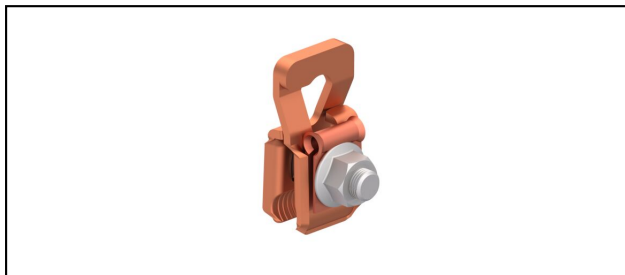


Seilhängerklappen

■ **SKTF5S** Tragseil- und Fahrdrathängerklammer**Anwendung**

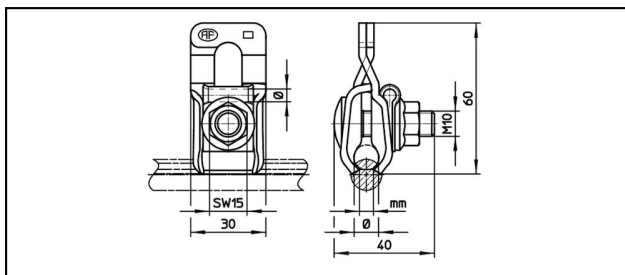
Für Seilhänger, stromführend

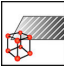
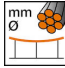


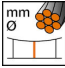
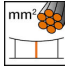
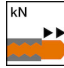

Eigenschaften

Anziehdrehmoment 20-25 Nm

Material

Körper aus CuNiSi oder Stahl rostfrei



Artikel-Nr.									
625.035.000	CuNiSi	9 - 13	50 - 95	5.5 - 7	4.5	10	4		0.115

Technische Spezifikationen: **Tragseil- und Fahrdrahthängerklemme SKTF5S**

Artikel-Nr.	625.035.000
Material	CuNiSi
Tragseil Durchmesser	9 - 13 mm
Tragseil Seilfläche	50 - 95 mm ²
Fahrdraht-Kerbe	5.5 - 7 mm
Hängerseil Durchmesser	4.5 mm
Hängerseil Fläche	10 mm ²
Ausreisskraft	4 kN
Anziehdrehmoment_2	20 - 25 N·m
Kommerzielle Spezifikation	
Zolltarifnummer	85359000
Ursprungsland	CH
Logistische Spezifikation	
Kilo / Stück	0.115 kg

