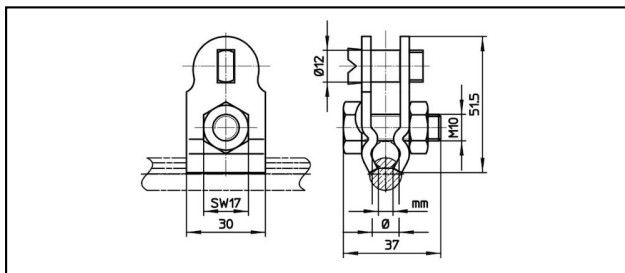
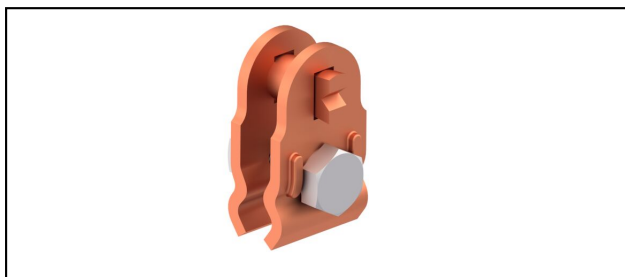


Seilhängerklammern

■ SKTF1

**Anwendung**





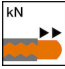

Für Seilhänger, stromführend / nicht stromführend

Eigenschaften

Anziehdrehmoment 20-25 Nm

Material

Körper aus CuNiSi

Artikel-Nr.									
625.017.000	6.5 - 8	25 - 50	3.75	52	3.5				0.183
625.009.152	6.5 - 13	50 - 95	3.75 - 8.5	52	3.5				0.183
625.008.147	13 - 16	95 - 150	3.75 - 8.5	57	3.5				0.183

Technische Spezifikationen: **SKTF1**

	625.017.000	625.009.152	625.008.147
Länge a	52 mm		57 mm
Fahrdraht-Kerbe	3.75 mm		
Tragseil Durchmesser	6.5 - 8 mm	6.5 - 13 mm	13 - 16 mm
Tragseil Seilfläche	25 - 50 mm ²	50 - 95 mm ²	95 - 150 mm ²
Ausreisskraft	3.5 kN		
Anziehdrehmoment 2	20 - 25 N·m		
Kommerzielle Spezifikation			
Zolltarifnummer	85359000		
Ursprungsland	CH		
Logistische Spezifikation			
Kilo / Stück	0.183 kg		

