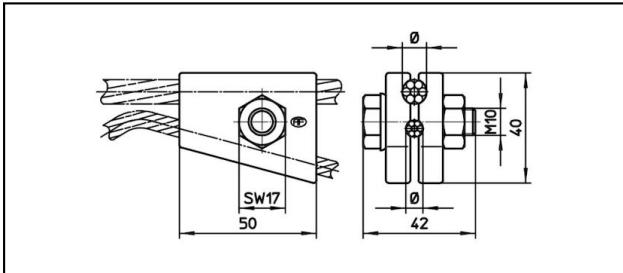
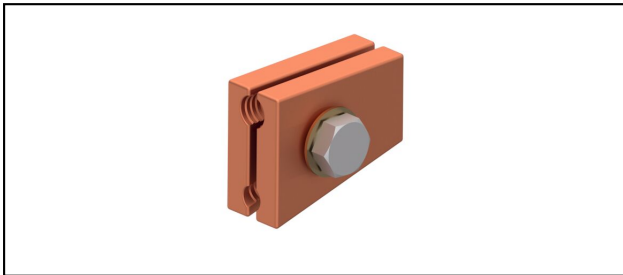


## Diverse Klemmen

■ **YK50** Y-Klemme**Anwendung**

Y-Seil

**Eigenschaften**



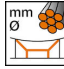


Max. Zugkraft Y-Seil 4.5 kN

Anziehdrehmoment 45 Nm

**Material**

CuNiSi

**Legende**1) für Y-Seil 25 mm<sup>2</sup>2) für Y-Seil 35 - 50 mm<sup>2</sup>

| Artikel-Nr. |  |  |  |  |  |  |  |  |  |
|-------------|---|---|---|--|--|--|--|---|---|
| 635.347.000 | 9   | 50  | 6.3   |  |  |  |  | 0.256   | 1   |

Technische Spezifikationen: **Y-Klemme YK50**

|                            |                    |
|----------------------------|--------------------|
| Artikel-Nr.                | 635.347.000        |
| Anziehdrehmoment           | 45 N·m             |
| Tragseil Durchmesser       | 9 mm               |
| Tragseil Seilfläche        | 50 mm <sup>2</sup> |
| Y-Seil Querschnitt         | 6.3 mm             |
| Texte                      |                    |
| Legende                    | 1                  |
| Kommerzielle Spezifikation |                    |
| Zolltarifnummer            | 85359000           |
| Ursprungsland              | unbestimmt         |
| Texte                      |                    |
| Legende                    | 1                  |
| Logistische Spezifikation  |                    |
| Kilo / Stück               | 0.256 kg           |

