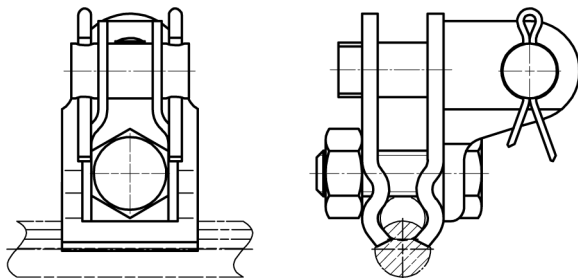


INSTALLATION INSTRUCTIONS

CABLE DROPPER CLAMP TYPE SKTF1K Edition 2011/10



1. Loosen the nuts.
2. Open the clamp.
3. Mount the clamp onto the contact wire.
4. Tighten the nut with 20 to 25 Nm.
5. Remove the splint and the bolt.
6. Fix the dropper cable with the bolt on the clamp.
7. Insert the splint and secure it.

Maintenance and Service

The cable dropper clamp SKTF1K is maintenance free, the life-time correlates with the life-time of the conductor.

