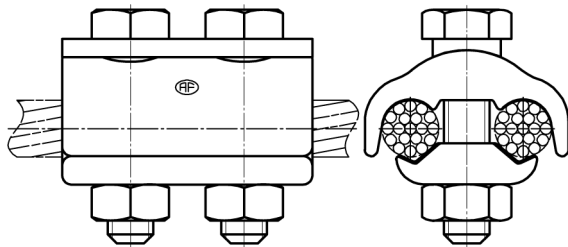


INSTALLATION INSTRUCTIONS

UNIVERSAL CLAMP TYPE UK55

Edition 2011/10



1. Clean the conductor with a wire-brush at the clamping points.
2. Remove the nuts and loosen the screws.
3. Insert the conductor as shown on the drawing.
4. Tighten the screws with 50 Nm and retighten twice.
5. Mount the nuts and counter them with 20 Nm.

Maintenance and Service

The universal clamp is maintenance free, the life-time correlates with the life-time of the conductor.

