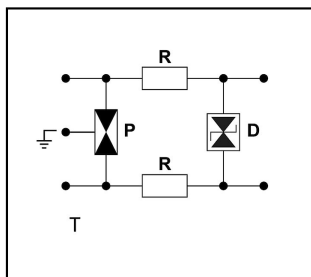
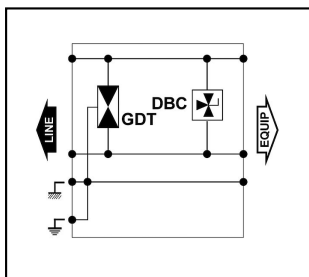
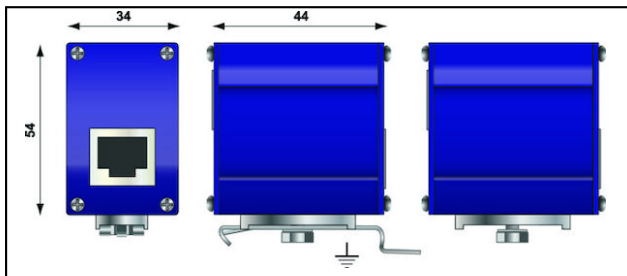


## Informatics, Telecommunication

### MJ 8

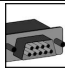


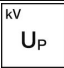





#### Characteristics

These surge protectors are designed to protect sensitive telecom terminals (modems, fax machines, ISDN-telephones...). This surge protector features in/out RJ45 and RJ11 connectors. Different types of installation possible.

#### Legend

a) POE-A and POE-B compatible

Article-Nr.	E-Number									
		Cat 6A	10Gbps/500MHz		$U_P$	$i_n$				1
296.581.540	970 518 003				0.02	0.5				

Technical Specifications: MJ 8

Article No.	296.581.540
Operating voltage max. [UcDC]	8 V
Nominal line voltage Un DC	5 V
Nominal discharge surge current (8/20)	0.5 kA
Nominal load current	1 A
Voltage protection level [Up]	0.02 kV
Fault indication	Signalunterbruch
Material housing	Metal
Signaling on the device	None
Max. Transmission rate/Frequency	10Gbps/500MHz
With remote signalling contact	No
Nominal discharge current [In]	2
Mounting method	DIN rail (top hat rail) 35 mm
Degree of protection (IP)	IP20
Applications with interface	Cat 6A
Standards	
Test standards International	IEC 61643-21
Test standards USA	UL497B
Commercial specification	
Customs number	85363000
country of origin	ZA*
Logistic specification	
VPE Weight	0.154 kg

