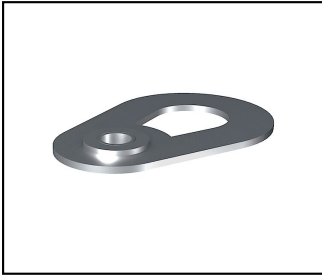


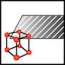


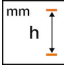


## Anchorage points

■ **EAP F** Anchorage point



### Characteristics

Flat single anchorage point made of Inox A2 for a rotatable screw connection on thread M16

Article-Nr.	E-Number									
310.000.006		InoxA2	115	75	10	4				10

Technical Specifications: **Anchorage point EAP F**

Article No.	310.000.006
<b>Material</b>	InoxA2
<b>Length a</b>	115 mm
<b>Width b</b>	75 mm
<b>Height H</b>	10 mm
<b>Number of person</b>	4
Commercial specification	
<b>Customs number</b>	73089000
<b>country of origin</b>	CH
Logistic specification	
<b>VPE Weight</b>	1.61 kg

