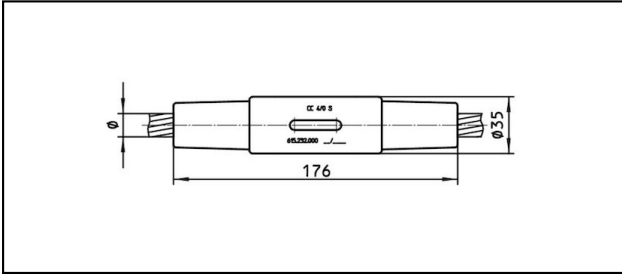


Conical coupler

■ KV176 Cone connector



Application

Tension and current-proofed connection for Cu, Bronze, Steel and Cu-Steel cables

Characteristics

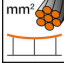


Service load min. 3 kN / max. 25 kN
Breaking load of corpus min. 80 kN

Material

Corpus CuNiSi / collet AlBz

Legend

1) Collet stainless steel

Article-Nr.									
615.227.000	S95	12.9	95					0.8	

Technical Specifications: **Cone connector KV176**

Article No.	615.227.000
Rail product name	S95
Catenary wire diameter	12.9 mm
Catenary wire section	95 mm ²
Commercial specification	
Customs number	85359000
country of origin	ZA*
Logistic specification	
Kilo / piece	0.8 kg

