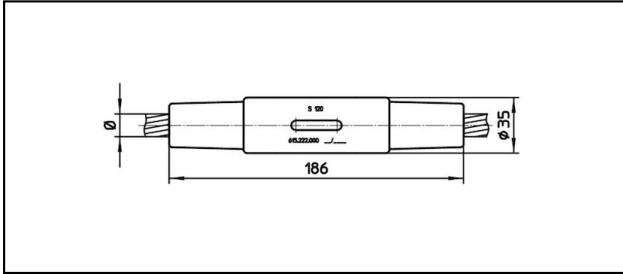


## Conical coupler

### ■ KV186 Cone connector



#### Application

Tension and current-proofed connection for Cu, Bronze, Steel and Cu-Steel cables

#### Characteristics



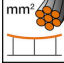
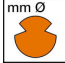



Service load min. 3 kN / max. 25 kN  
Breaking load of corpus min. 80 kN

#### Material

Corpus CuNiSi / Collet AIBz resp. stainless steel

#### Legend

1) Colour code

Article-Nr.									
615.222.000	S120	14.5	120					0.78	

Technical Specifications: **Cone connector KV186**

Article No.	615.222.000
<b>Rail product name</b>	S120
<b>Catenary wire diameter</b>	14.5 mm
<b>Catenary wire section</b>	120 mm <sup>2</sup>
Commercial specification	
<b>Customs number</b>	85359000
<b>country of origin</b>	CH
Logistic specification	
<b>Kilo / piece</b>	0.78 kg

