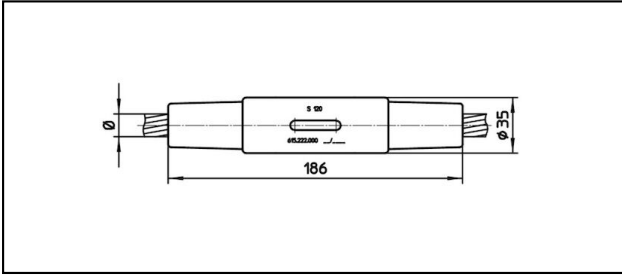


Conical coupler

■ KV186 Cone connector



Application

Tension and current-proofed connection for Cu, Bronze, Steel and Cu-Steel cables

Characteristics


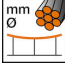
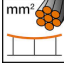
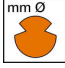

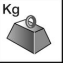

Service load min. 3 kN / max. 25 kN
Breaking load of corpus min. 80 kN

Material

Corpus CuNiSi / Collet AIBz resp. stainless steel

Legend

1) Colour code

Article-Nr.									
615.216.000	S128	14.5	128					0.78	1

Technical Specifications: **Cone connector KV186**

Article No.	615.216.000
Rail product name	S128
Catenary wire diameter	14.5 mm
Catenary wire section	128 mm ²
comment	1
Commercial specification	
Customs number	85359000
country of origin	CH
Texte	
comment	1
Logistic specification	
Kilo / piece	0.78 kg

