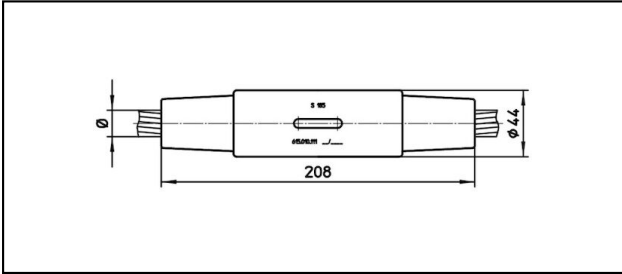
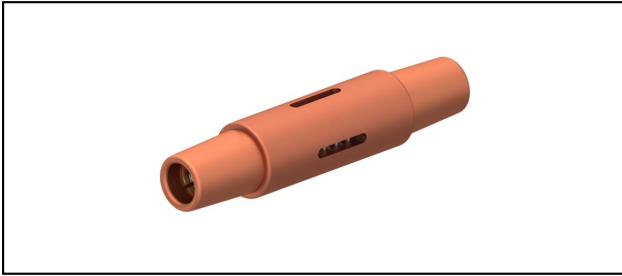


Conical coupler

■ KV208 Cone connector



Application

Tension and current-proofed connection for Cu, Bronze, Steel and Cu-Steel cables

Characteristics


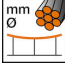
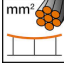
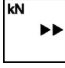


Service load min. 3 kN / max. 25 kN

Material

Corpus CuNiSi / Collet AIBz

Legend

1) Colour code

Article-Nr.									
615.010.111	S185	17.5	185	80				1.55	

Technical Specifications: **Cone connector KV208**

Article No.	615.010.111
Rail product name	S185
Catenary wire diameter	17.5 mm
Catenary wire section	185 mm ²
Minimum breaking load	80
Commercial specification	
Customs number	85359000
country of origin	CH
Logistic specification	
Kilo / piece	1.55 kg

