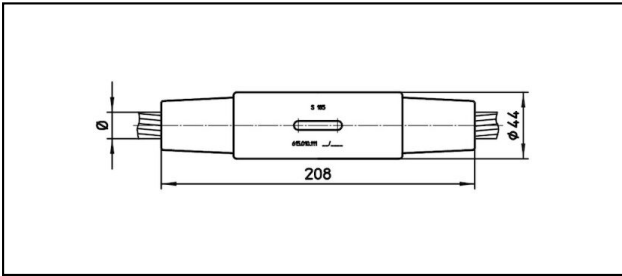
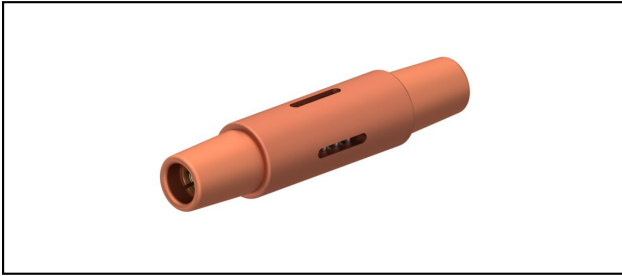


Conical coupler

■ KV208 Cone connector



Application

Tension and current-proofed connection for Cu, Bronze, Steel and Cu-Steel cables

Characteristics



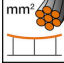



Service load min. 3 kN / max. 25 kN

Material

Corpus CuNiSi / Collet AIBz

Legend

1) Colour code

Article-Nr.									
615.214.000	S202	18.75	202	80				1.55	1

Technical Specifications: **Cone connector KV208**

Article No.	615.214.000
Rail product name	S202
Catenary wire diameter	18.75 mm
Catenary wire section	202 mm ²
Minimum breaking load	80
comment	1
Commercial specification	
Customs number	85359000
country of origin	CH
Texte	
comment	1
Logistic specification	
Kilo / piece	1.55 kg

