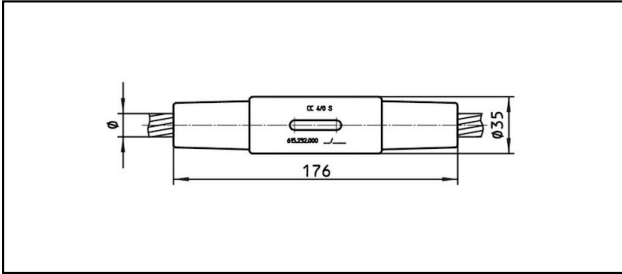


## Conical coupler

### ■ KV176 Cone connector



#### Application

Tension and current-proofed connection for Cu, Bronze, Steel and Cu-Steel cables

#### Characteristics



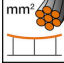

Service load min. 3 kN / max. 25 kN  
Breaking load of corpus min. 80 kN

#### Material

Corpus CuNiSi / collet AlBz

#### Legend

1) Collet stainless steel

Article-Nr.									
615.232.000	S107	13.3	107					0.8	

Technical Specifications: **Cone connector KV176**

Article No.	615.232.000
<b>Rail product name</b>	S107
<b>Catenary wire diameter</b>	13.3 mm
<b>Catenary wire section</b>	107 mm <sup>2</sup>
Commercial specification	
<b>Customs number</b>	85359000
<b>country of origin</b>	CH
Logistic specification	
<b>Kilo / piece</b>	0.8 kg

