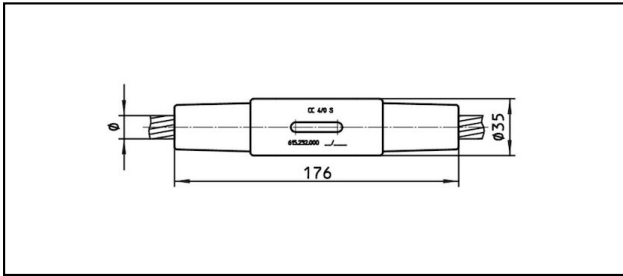


Conical coupler

KV176



Application

Tension and current-proofed connection for Cu, Bronze, Steel and Cu-Steel cables

Characteristics



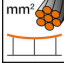


Service load min. 3 kN / max. 25 kN
Breaking load of corpus min. 80 kN

Material

Corpus CuNiSi / collet AlBz

Legend

1) Collet stainless steel

Article-Nr.									
615.227.000	S95	12.9	95					0.8	
615.232.000	S107	13.3	107					0.8	
615.226.000	S50 St	9.6	50					0.81	1

Technical Specifications: **KV176**

	615.227.000	615.232.000	615.226.000
Rail product name	S95	S107	S50 St
Catenary wire diameter	12.9 mm	13.3 mm	9.6 mm
Catenary wire section	95 mm ²	107 mm ²	50 mm ²
Commercial specification			
Customs number	85359000		
country of origin	ZA*	CH	
Logistic specification			
Kilo / piece	0.8 kg		0.81 kg

