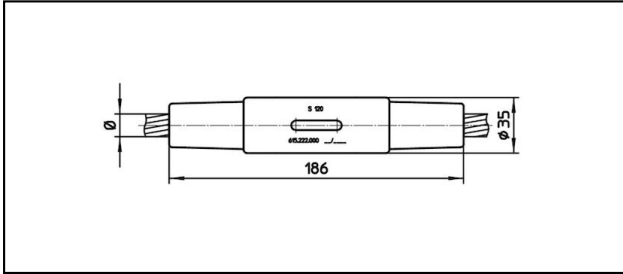


Conical coupler

KV186



Application

Tension and current-proofed connection for Cu, Bronze, Steel and Cu-Steel cables

Characteristics

Service load min. 3 kN / max. 25 kN
Breaking load of corpus min. 80 kN

Material

Corpus CuNiSi / Collet AIBz resp. stainless steel

Legend

1) Colour code

Article-Nr.	«N»	mm Ø	mm²	mm Ø	mm²			Kg	
615.005.105	S120	14	120					0.78	
615.215.000	S120	14.5	120					0.78	1
615.222.000	S120	14.5	120					0.78	
615.216.000	S128	14.5	128					0.78	1
615.006.106	S150	15.75	150					0.76	
615.230.000	FD120			13.2	120			0.8	

Technical Specifications: **KV186**

	615.005.105	615.215.000	615.222.000	615.216.000
Rail product name	S120			S128
Catenary wire diameter	14 mm	14.5 mm		
Catenary wire section	120 mm ²			128 mm ²
Contact wire diameter				
Contact wire section				
Commercial specification				
Customs number	85359000			
country of origin	CH			
Logistic specification				
Kilo / piece	0.78 kg			

	615.006.106	615.230.000
Rail product name	S150	FD120
Catenary wire diameter	15.75 mm	
Catenary wire section	150 mm ²	
Contact wire diameter		13.2 mm
Contact wire section		120 mm ²
Commercial specification		
Customs number	85359000	
country of origin	CH	ZA*
Logistic specification		
Kilo / piece	0.76 kg	0.8 kg

