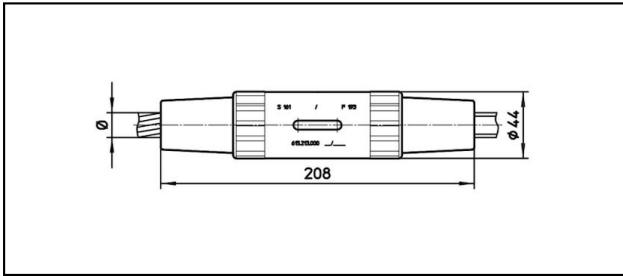
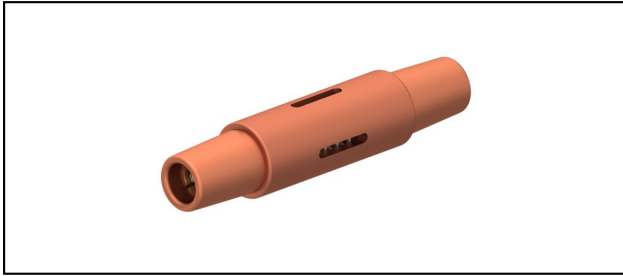


Conical coupler

RV208



Application

Tensioned and current-proofed Cu, Cu-Steel or Bz cables

Characteristics

Service load min. 3 kN / max. 25 kN








Breaking load of corpus min. 80 kN

Material

Corpus CuNiSi / Collet AIBz

Legend

1) With colour code

Article-Nr.									
615.213.000	S161/F193	16.75	161	16.75	193			1.35	1
615.237.000	S181/S161	17.5 - 16.8	181 - 161					1.4	
615.212.000	S202/F193	18.75	202	16.75	193			1.35	1

Technical Specifications: **RV208**

	615.213.000	615.237.000	615.212.000
Rail product name	S161/F193	S181/S161	S202/F193
Catenary wire diameter	16.75 mm	17.5 - 16.8 mm	18.75 mm
Catenary wire section	161 mm ²	181 - 161 mm ²	202 mm ²
Contact wire diameter	16.75 mm		16.75 mm
Contact wire section	193 mm ²		193 mm ²
Commercial specification			
Customs number	85359000		
country of origin	CH		
Logistic specification			
Kilo / piece	1.35 kg	1.4 kg	1.35 kg

