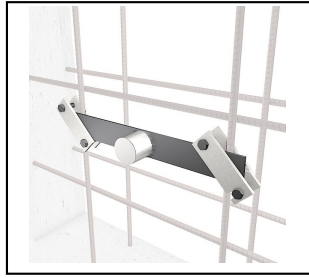
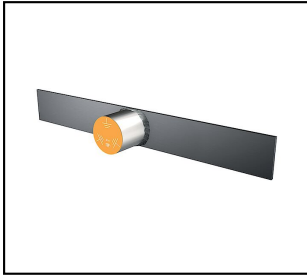


## Foundation earthing components

### ■ FE 89 Connection part 40kA



#### Application

For high short circuit currents

40 kA / 0.1 s / 16.7 Hz

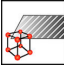
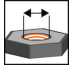

31.5 kA / 0.5 s / 50 Hz

It is installed using two FE 43 clamps (Art. 281.096.000)

#### Characteristics

Without accessories.

For transformer stations and railway systems.

Article-Nr.	E-Number	kA/s		mm							
260.065.000	156 941 090	31 - 40	InoxA4	400	M16						1

Technical Specifications: **Connection part 40kA FE 89**

	260.065.000
<b>Short circuit current</b>	31 - 40 kA/1s
<b>Material</b>	InoxA4
<b>Bolt dimension metric</b>	16
<b>Diameter connection plate</b>	50 mm
<b>Internal thread</b>	M16
<b>Length a</b>	400 mm
Commercial specification	
<b>Customs number</b>	85389000
<b>country of origin</b>	CH
Logistic specification	
<b>VPE Weight</b>	1.373 kg

