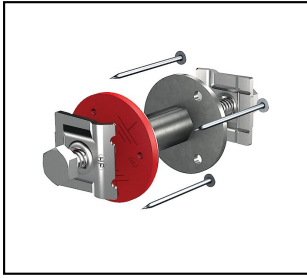


## Foundation earthing components

### ■ FE 68 Connection point, short

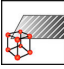

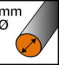
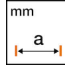



#### Characteristics

Suited for 50mm<sup>2</sup> cable

#### Content

- 1 connection point (type FE 68)
- 1 Universal contact clamp (type AV 50)
- 1 Connection plate and screw (type FE 85)
- 3 Clout nails made of stainless steel

Article-Nr.	E-Number	kA/s (S)								
280.097.006	156 941 220	6	InoxA4	M10x25	8 - 10	50				25

Technical Specifications: **Connection point, short FE 68**

Article No.	280.097.006
Short circuit current	6 kA/1s
Material	InoxA4
Screw	M10x25
Wire diameter	8 - 10 mm
Length a	50 mm
Bolt dimension metric	10
Connecting shaft	10 mm
Diameter connection plate	50 mm
Material connection lug	rostfreier Stahl (V4A)
Commercial specification	
Customs number	85389000
country of origin	CH
Logistic specification	
VPE Weight	7.2 kg

