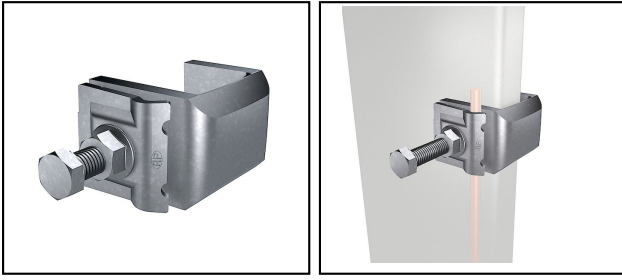

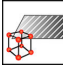
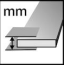
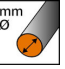



Conductor connections and junctions

■ PA 89 Connection terminal



Article-Nr.	E-Number									
270.050.001	156 804 000	H	InoxA4	2 - 16	6 - 10					25

Technical Specifications: **Connection terminal PA 89**

Article No.	270.050.001
Approved class H / N (EN 62561-1)	H
Material	InoxA4
Clamping range flat	2 - 16 mm
Wire diameter	6 - 10 mm
Clamping range	20 mm
Type of connector	Access-clip
Type of fastening screws	Hexagon screw
Surface protection	unbehandelt
required torque	12 N·m
Commercial specification	
Customs number	85389000
country of origin	CH
Logistic specification	
VPE Weight	5.31 kg

