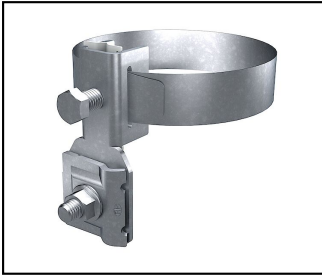



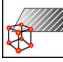
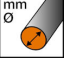
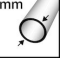
Conductor connections and junctions

■ AV 26 Contact clip



Characteristics

With connection terminal for longitudinal and transversal wiring.
Not to be used in the ground.

| Article-Nr. | E-Number |  |  |  |  | | | | |  |
|-------------|-------------|---|---|---|---|--|--|--|--|---|
| 280.105.001 | 156 831 000 | H | InoxA2 | 6 - 10 | 20 - 40 | | | | | 10 |
| 280.105.002 | 156 831 050 | H | InoxA2 | 6 - 10 | 20 - 80 | | | | | 10 |
| 280.105.003 | 156 831 080 | H | InoxA2 | 6 - 10 | 20 - 120 | | | | | 10 |
| 280.105.004 | 156 831 090 | H | InoxA2 | 6 - 10 | 20 - 180 | | | | | 10 |
| 280.105.005 | 156 832 370 | H | InoxA2 | 6 - 10 | 20 - 250 | | | | | 10 |

Technical Specifications: **Contact clip AV 26**

| | 280.105.001 | 280.105.002 | 280.105.003 | 280.105.004 |
|---|-------------------------|-------------|-------------|-------------|
| Approved class H / N (EN 62561-1) | H | | | |
| Material | InoxA2 | | | |
| Wire diameter | 6 - 10 mm | | | |
| External diameter | 20 - 40 mm | 20 - 80 mm | 20 - 120 mm | 20 - 180 mm |
| Cross section of the connecting conductors | 25 - 50 mm ² | | | |
| Clamping/chucking range | 20 - 40 mm | 20 - 80 mm | 20 - 120 mm | 20 - 180 mm |
| Number of conductors | 1 | | | |
| Surface protection | unbehandelt | | | |
| required torque | 15 N·m | | | |
| Commercial specification | | | | |
| Customs number | 85389000 | | | |
| country of origin | CH | CE* | | |
| Logistic specification | | | | |
| VPE Weight | 1.515 kg | 1.604 kg | 1.61 kg | 1.74 kg |

| | 280.105.005 |
|---|-------------------------|
| Approved class H / N (EN 62561-1) | H |
| Material | InoxA2 |
| Wire diameter | 6 - 10 mm |
| External diameter | 20 - 250 mm |
| Cross section of the connecting conductors | 25 - 50 mm ² |
| Clamping/chucking range | 20 - 250 mm |
| Number of conductors | 1 |
| Surface protection | unbehandelt |
| required torque | 15 N·m |
| Commercial specification | |
| Customs number | 85389000 |
| country of origin | CE* |
| Logistic specification | |
| VPE Weight | 1.95 kg |

