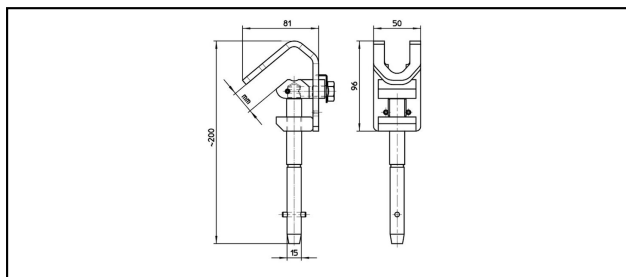


## Catenary contact wire hook/clamp

### ■ SKH2 Contact wire hook for earthing rod



#### Application

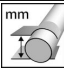


For earthing rod type PES1350 of overhead contact lines

#### Characteristics

Contact piece Cu  
Connection bolt M12

#### Material

Stainless Steel  
Contact piece Cu

Article-Nr.	 mm	 kA/ms Ik							 Kg
649.001.125	6 - 35	40/100							1.15

Technical Specifications: **Contact wire hook for earthing rod SKH2**

	649.001.125
<b>Clamping range</b>	6 - 35 mm
<b>Short circuit current</b>	40/100 kA/ms
Commercial specification	
<b>Customs number</b>	85359000
<b>country of origin</b>	CH
Logistic specification	
<b>Kilo / piece</b>	1.15 kg

