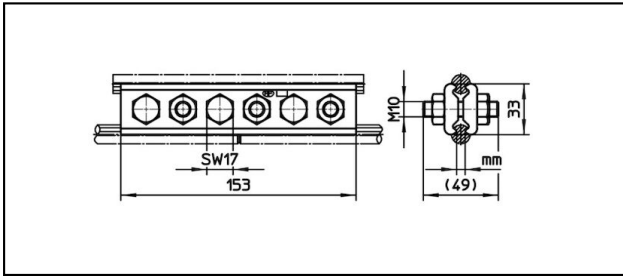
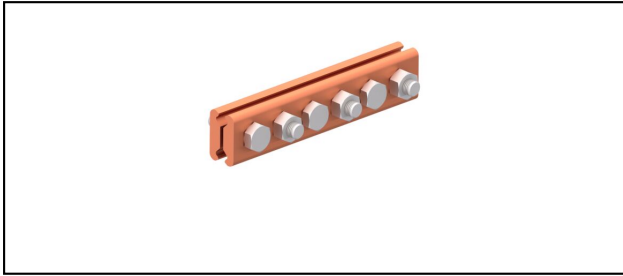


### Splice fittings

■ **SK6-153**



**Application**

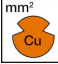
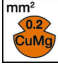

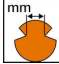
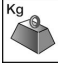
Contact wire splice fitting for copper or copper alloy contact wire

**Characteristics**

Torque 50 Nm

**Material**

Clamping plates CuNiSi

Article-Nr.	 mm <sup>2</sup>	 mm <sup>2</sup>	 mm <sup>2</sup>	 mm					 Kg
635.012.000	- 178	- 107	- 120	4.5 - 8.5					0.8
635.041.000	- 178	- 107	- 120	4.5 - 6.9					0.8

Technical Specifications: **SK6-153**

	635.012.000	635.041.000
<b>Starting torque</b>	50 N·m	
<b>Contact wire section Cu</b>	- 178 mm <sup>2</sup>	
<b>Contact wire section CuMg 0.2</b>	- 107 mm <sup>2</sup>	
<b>Contact wire section CuAg</b>	- 120 mm <sup>2</sup>	
<b>Contact wire groove</b>	4.5 - 8.5 mm	4.5 - 6.9 mm
Commercial specification		
<b>Customs number</b>	85359000	
<b>country of origin</b>	CH	
Logistic specification		
<b>Kilo / piece</b>	0.8 kg	

