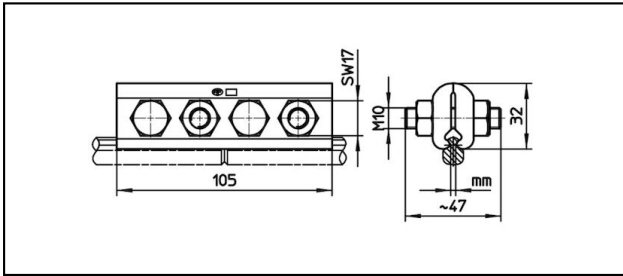
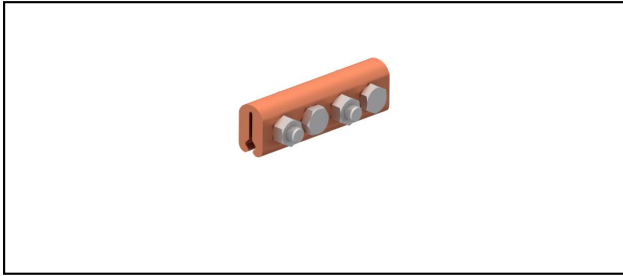


Splice fittings

■ **SKF4-105**



Application

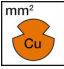
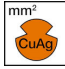
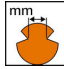

Contact wire splice fitting for copper or copper alloy contact wire

Characteristics

Torque 50 Nm

Material

Clamping plates CuNiSi

Article-Nr.	 mm ²	 mm ²	 mm						 Kg
635.026.000	- 120	- 120	3.75						0.618

Technical Specifications: **SKF4-105**

	635.026.000
Starting torque	50 N·m
Contact wire section Cu	- 120 mm ²
Contact wire section CuAg	- 120 mm ²
Contact wire groove	3.75 mm
Commercial specification	
Customs number	85359000
country of origin	CH
Logistic specification	
Kilo / piece	0.618 kg

