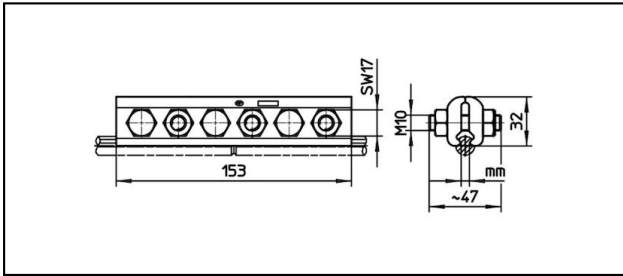
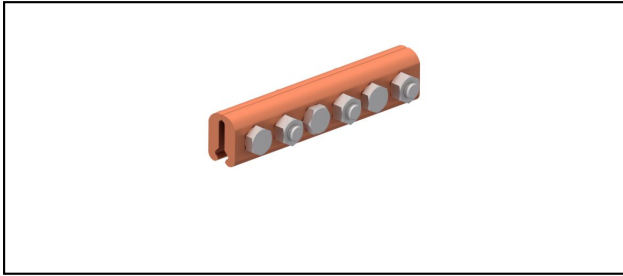


Splice fittings

SKF6-153



Application

Contact wire splice fitting for copper or copper alloy contact wire

Characteristics

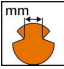
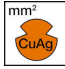
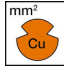
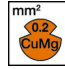
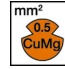


Torque 50 Nm

Material

Clamping plates CuNiSi

Legend

- 1) With washer with spherical seal
- 2) Special high tensile CuNiSi

Article-Nr.									
635.010.000	5 - 6.9	- 150	- 150	- 107	- 107			0.9	1
635.322.000	5 - 6.9	- 150	- 150	- 107	- 107			0.87	
635.363.000	5.6 - 6.9	- 150	- 150	- 150	- 150			0.87	2

Technical Specifications: **SKF6-153**

	635.010.000	635.322.000	635.363.000
Starting torque	50 N·m		
Contact wire section Cu	- 150 mm ²		
Contact wire section CuMg 0.2	- 107 mm ²	- 150 mm ²	
Contact wire section CuMg 0.5	- 107 mm ²	- 150 mm ²	
Contact wire section CuAg	- 150 mm ²		
Contact wire groove	5 - 6.9 mm	5.6 - 6.9 mm	
Commercial specification			
Customs number	85359000		
country of origin	CH		
Logistic specification			
Kilo / piece	0.9 kg	0.87 kg	

