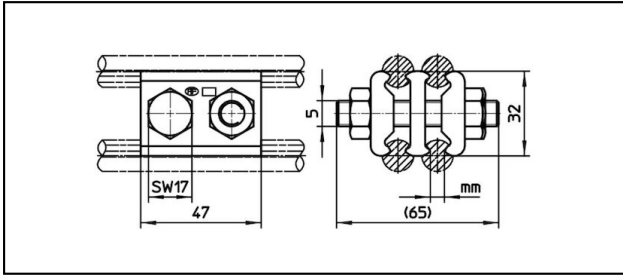


Splice fittings

■ **SK2FD47** Contact wire splice fitting / armature



Application


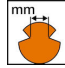

2-contact-wire-splice fitting for copper or copper alloy contact wire

Characteristics

Torque 50 Nm
Not for full tension

Material

Clamping plates CuNiSi

Article-Nr.										
635.049.000	65 - 161	3.75 - 8.5								0.352

Technical Specifications: **Contact wire splice fitting / armature SK2FD47**

Article No.	635.049.000
Starting torque	50 N·m
Contact wire section	65 - 161 mm ²
Contact wire groove	3.75 - 8.5 mm
Commercial specification	
Customs number	85359000
country of origin	CH
Logistic specification	
Kilo / piece	0.352 kg

