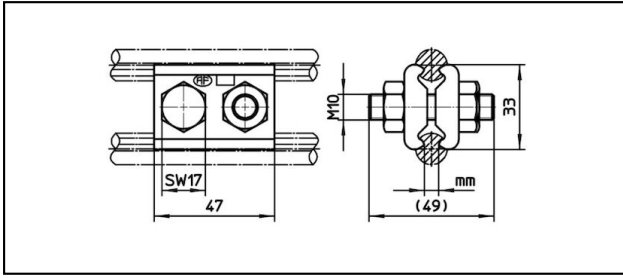


Splice fittings

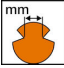

■ **SK2-47** Splice fitting



Application
Parallel clamp for contact wires

Characteristics
Torque 50 Nm
Not for full tension

Material
Clamping plates CuNiSi

Article-Nr.										
635.042.000	4.5 - 6.9									0.25

Technical Specifications: **Splice fitting SK2-47**

Article No.	635.042.000
Contact wire groove	4.5 - 6.9 mm
Starting torque	50 N·m
Commercial specification	
Customs number	85359000
country of origin	CH
Logistic specification	
Kilo / piece	0.25 kg

