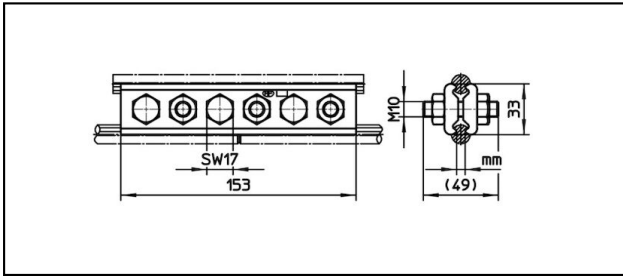
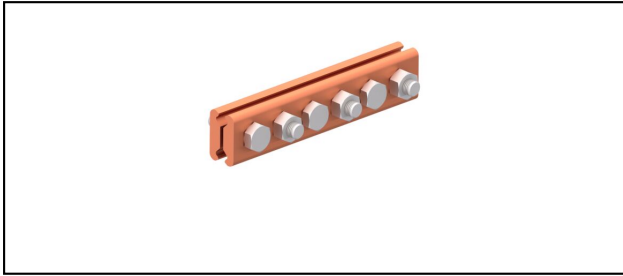


Splice fittings

■ **SK6-153** Splice fitting



Application

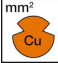
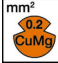

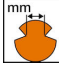
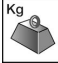
Contact wire splice fitting for copper or copper alloy contact wire

Characteristics

Torque 50 Nm

Material

Clamping plates CuNiSi

Article-Nr.	 mm ²	 mm ²	 mm ²	 mm					 Kg
635.012.000	- 178	- 107	- 120	4.5 - 8.5					0.8

Technical Specifications: **Splice fitting SK6-153**

Article No.	635.012.000
Starting torque	50 N·m
Contact wire section Cu	- 178 mm ²
Contact wire section CuMg 0.2	- 107 mm ²
Contact wire section CuAg	- 120 mm ²
Contact wire groove	4.5 - 8.5 mm
Commercial specification	
Customs number	85359000
country of origin	CH
Logistic specification	
Kilo / piece	0.8 kg

