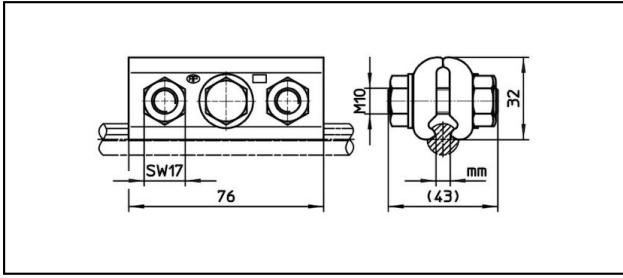


Splice fittings

■ **SKF3-76** Splice fitting



Application

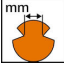

Contact wire splice fitting for copper or copper alloy contact wire

Characteristics

Torque 50 Nm
 Not for full tension
 With washer and spherical seal

Material

Clamping plates CuNiSi

Article-Nr.									
635.324.000	5 - 6.9								0.45

Technical Specifications: **Splice fitting SKF3-76**

Article No.	635.324.000
Starting torque	50 N·m
Contact wire groove	5 - 6.9 mm
Commercial specification	
Customs number	85359000
country of origin	CH
Logistic specification	
Kilo / piece	0.45 kg

