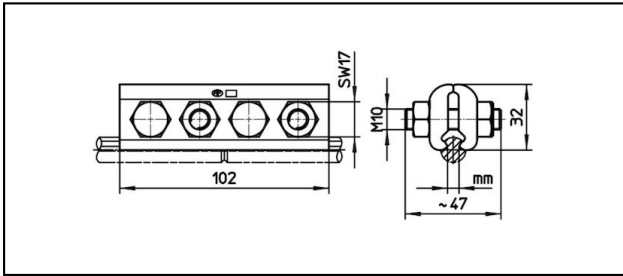
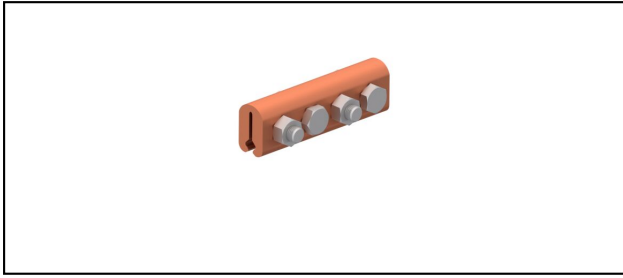


Splice fittings

■ **SKF4-102** Splice fitting



Application

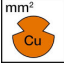
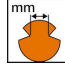

Contact wire splice fitting for copper contact wire

Characteristics

Torque 50 Nm

Material

Clamping plates CuNiSi

Article-Nr.	 mm ²	 mm							 Kg
635.038.000	- 107	5.6 - 6.9							0.602

Technical Specifications: **Splice fitting SKF4-102**

Article No.	635.038.000
Starting torque	50 N·m
Contact wire section Cu	- 107 mm ²
Contact wire groove	5.6 - 6.9 mm
Commercial specification	
Customs number	85359000
country of origin	CH
Logistic specification	
Kilo / piece	0.602 kg

